

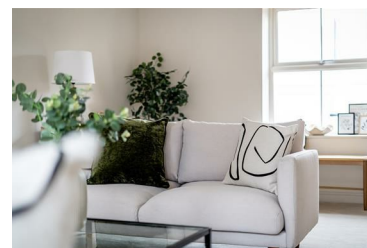
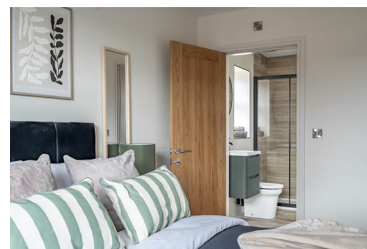


## Plot 5 Larth Close, Whitley, DN14 0JF

Asking Price £535,000



Luxurious 3 bedroom, 2 bathroom detached family home with orangery on a select development of only 6 properties.



- Award Winning Design
- BOSCH Integrated Kitchen Appliances
- Underfloor Heating Throughout the Ground Floor
- Traditional Brickwork Enhanced with Natural Stone Heads and Cills
- Large driveways for Convenient off-Road Parking
- 6 Year Architectural Build Warranty
- Quality Kitchen from 'Howdens'
- Air Source Heat Pump for Energy-Efficient Central Heating
- Landscaped gardens with Outdoor Tap and Security Lighting
- Detached garage – Ideal for Secure Parking or Storage